



---

# GET CONNECTED

TE Industrial & Commercial Transportation  
Product Overview

## TE Connectivity

TE Connectivity (TE) is a technology leader that designs and manufactures electronic connectors, components, and accessories. TE's extensive portfolio of over 500,000 products makes equipment in consumer, industrial, network, and transportation industries smarter, safer, greener, and more connected. TE's Industrial & Commercial Transportation products are specifically designed for on- and off-highway industries.



## Industrial & Commercial Transportation Products

TE Connectivity's Industrial & Commercial Transportation electrical connectors are designed for applications where dust, dirt, moisture, salt spray, and vibration can contaminate or damage electrical connections.

Industrial & Commercial Transportation connectors provide solutions for numerous design and application requirements and feature options including:

- Cavity arrangements from 1 to 128
- 4-22 AWG (25.00-.20 mm<sup>2</sup>)
- Multiple shell materials

Key features:

- Resistant to most industrial fluids
- Gas tight crimp terminations
- High performance molded shells
- Redundant silicone seals
- Extended wire sealing ranges

# AMPSEAL Connectors

AMPSEAL connectors are designed for heavy duty PCB applications. They accept smaller gauge wire and offer multiple keying options. Each arrangement can be specified with either straight or right-angle pins. AMPSEAL connectors feature an integrated latch for mating and an integrated wedgelock for contact retention.



## Key Features

Contact System:	1.3 mm
Contact Size:	1.3 mm (up to 17 amps gold, up to 8 amps tin)
Wire Gauge:	16-20 AWG (1.25-0.50 mm <sup>2</sup> )
Cavity Arrangements:	8, 14, 23, 35
Material:	Thermoplastic housing
Mating Mechanism:	Integrated latch
Contact Retention:	Integrated terminal position assurance (TPA)
Mounting Style:	PCB
Accessories:	Wire relief

# AMPSEAL 16 Connectors

The heavy duty AMPSEAL 16 connector system is rectangular and suitable for in-line applications. AMPSEAL 16 connectors feature a primary latch reinforcement (PLR) and connector position assurance (CPA) designed to withstand high vibration in harsh environments. Variations, such as keying options or reduced diameter seals, are available.



## Key Features

Contact System:	1.58 mm HDSF
Contact Sizes:	1.58 mm (up to 13 amps)
Wire Gauge:	14-20 AWG (2.00-0.50 mm <sup>2</sup> )
Cavity Arrangements:	2, 3, 4, 6, 8, 12
Material:	Thermoplastic housing
Mating Mechanism:	Integrated latch with connector position assurance (CPA)
Contact Retention:	Primary latch reinforcement (PLR)
Mounting Styles:	In-line
Accessories:	Backshells, mounting clips

# Circular DIN

The Circular DIN connectors are designed to meet the requirements of the DIN 72585/ISO 15170 standards. They feature a coupling ring for mating. Circular DIN connectors are suitable for in-line, flange mount, or PCB applications. Accessories to complement the Circular DIN connectors include backshells and a mounting ring.

## Key Features

Contact System:	2.5 mm
Contact Size:	2.5 mm (up to 40 amps)
Wire Gauge:	2.50-.20 mm <sup>2</sup>
Cavity Arrangements:	2, 3, 4
Material:	Thermoplastic housing
Mating Mechanism:	Coupling ring
Mounting Styles:	In-line, flange, or PCB
Accessories:	Backshells, mounting ring



# DRB Series

The DEUTSCH DRB Series connectors are heavy duty environmentally sealed connectors, suitable for bulkhead applications. They are designed to accommodate multiple wire gauges and feature high pin counts. The DRB Series requires secondary wedgelocks for contact positioning. To increase design flexibility, the DRB Series offers several mounting flange options and boots.



## Key Features

Contact System:	DEUTSCH
Contact Sizes:	4 (100 amps), 8 (60 amps), 12 (25 amps), 16 (13 amps), 20 (7.5 amps)
Wire Gauge:	6-22 AWG (16.00-0.35 mm <sup>2</sup> )
Cavity Arrangements:	48, 60, 102, 128
Material:	Thermoplastic housing
Mating Mechanism:	Jack screw
Contact Retention:	Wedgelocks
Mounting Styles:	Flange
Accessories:	Boots

# DRC Series

The DEUTSCH environmentally sealed DRC Series is a rectangular connector series that offers several cavity arrangements and accepts size 16 and 20 contacts. Mounting options include in-line, flange, and PCB mount. Accessory items for the DRC Series include boots, backshells, and gaskets.

## Key Features

Contact System:	DEUTSCH
Contact Sizes:	16 (13 amps), 20 (7.5 amps)
Wire Gauge:	14-22 AWG (2.50-0.35 mm <sup>2</sup> )
Cavity Arrangements:	24, 40, 50, 60, 64, 70, 76
Material:	Thermoplastic housing
Mating Mechanism:	Jackscrow
Mounting Styles:	In-line, flange, or PCB
Accessories:	Backshells, boots, gaskets

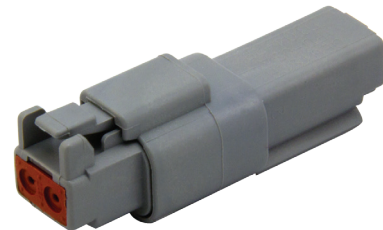
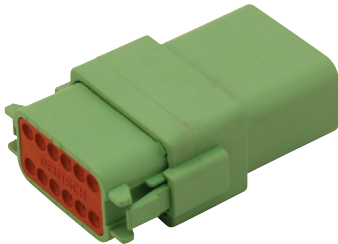


# DT Series

DEUTSCH DT Series connectors are rugged thermoplastic connectors. The environmentally sealed DT Series has integrated redundant seals and requires secondary wedgelocks. Several modifications are available including flanges, keying, and shrink boot adapters. DT Series accessories include gaskets, dust caps, boots, and backshells.

## Key Features

Contact System:	DEUTSCH
Contact Size:	16 (13 amps)
Wire Gauge:	14-20 AWG (2.00-0.50 mm <sup>2</sup> )
Cavity Arrangements:	2, 3, 4, 6, 8, 12
Material:	Thermoplastic housing
Mating Mechanism:	Integrated latch
Contact Retention:	Wedgelocks
Mounting Styles:	In-line, flange, or PCB
Accessories:	Backshells, boots, dust caps, gaskets, mounting clips



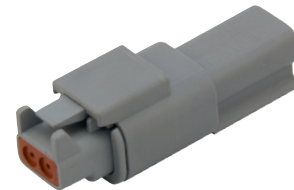
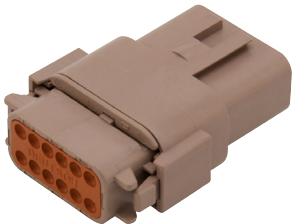


# DTM Series

The DEUTSCH environmentally sealed DTM Series is designed to accept smaller gauge wire. The DTM Series has integrated redundant seals and requires secondary wedgelocks. Available modifications include keying and shrink boot adapters. For design flexibility, optional accessories are available.

## Key Features

Contact System:	DEUTSCH
Contact Size:	20 (7.5 amps)
Wire Gauge:	14-22 AWG (2.50-0.35 mm <sup>2</sup> )
Cavity Arrangements:	2, 3, 4, 6, 8, 12
Material:	Thermoplastic housing
Mating Mechanism:	Integrated latch
Contact Retention:	Wedgelocks
Mounting Styles:	In-line, flange, or PCB
Accessories:	Boots, mounting clips

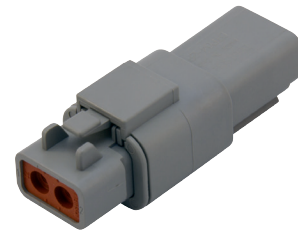


# DTP Series

The DEUTSCH DTP Series is an environmentally sealed solution for larger wire gauge designs. The DTP Series has integrated redundant seals and requires secondary wedgelocks. Modifications, including flanges and shrink boot adapters, are available.

## Key Features

Contact System:	DEUTSCH
Contact Size:	12 (25 amps)
Wire Gauge:	10-14 AWG (6.00-2.00 mm <sup>2</sup> )
Cavity Arrangements:	2, 4
Material:	Thermoplastic housing
Mating Mechanism:	Integrated latch
Contact Retention:	Wedgelocks
Mounting Styles:	In-line, flange, or PCB
Accessories:	Boots, gaskets, mounting clips



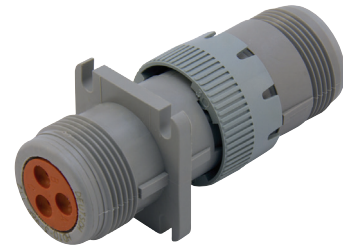
# HD10 Series

The DEUTSCH HD10 Series is an environmentally sealed thermoplastic cylindrical connector series. All HD10 Series connectors are available either in-line or flanged. The HD10 Series is heavily used for diagnostic connectors and helps eliminate issues associated with assembly and maintenance time. The HD10 Series 9-pin meets the requirements of the J1939/13 standard including Type II.



## Key Features

Contact System:	DEUTSCH
Contact Sizes:	4 (100 amps), 12 (25 amps), 16 (13 amps)
Wire Gauge:	6-20 AWG (16.00-0.50 mm <sup>2</sup> )
Cavity Arrangements:	3, 4, 5, 6, 9
Material:	Thermoplastic housing
Mating Mechanism:	Coupling ring
Mounting Styles:	In-line, flange, or PCB
Accessories:	Backshells, boots, dust caps, gaskets, lanyards, mounting clips, strain relief



# HDP20/HD30 Series

The DEUTSCH environmentally sealed HDP20/HD30 Series are heavy duty, multi-pin circular connectors. Available in metal or thermoplastic housings, these connectors feature quick connect-disconnect bayonet coupling and single hole bulkhead mounting. The HDP20/HD30 Series offers two shell sizes and can accommodate mixed wire gauges.



## Key Features

Contact System:	DEUTSCH
Contact Sizes:	4 (100 amps), 8 (60 amps), 12 (25 amps), 16 (13 amps), 20 (7.5 amps)
Wire Gauge:	4-22 AWG (25.00-0.35 mm <sup>2</sup> )
Cavity Arrangements:	2, 6, 7, 8, 9, 14, 16, 18, 19, 20, 21, 23, 29, 31, 33, 35, 47
Material:	Thermoplastic or aluminum housing
Mating Mechanism:	Coupling ring
Mounting Styles:	In-line, flange
Accessories:	Backshells, boots, dust caps, gaskets, mounting hardware, strain relief



# HDSCS Connectors

The Heavy Duty Sealed Connector Series (HDSCS) offers several cavity arrangements and mixed wire sizes. The rugged, thermoplastic connectors have a secondary lock with poke-yoke feature and can be used for in-line or flange mount applications. HDSCS connectors are available in five housing sizes and four keying options.



## Key Features

Contact System:	AMP MCP
Contact Sizes:	1.5K (up to 20 amps), 2.8 (up to 40 amps), 6.3 (up to 40 amps)
Wire Size:	6.0-.20 mm <sup>2</sup>
Cavity Arrangements:	2, 3, 4, 6, 7, 8, 10, 12, 15, 16, 18
Material:	Thermoplastic housing
Mating Mechanism:	Slide lock
Contact Retention:	Integrated secondary lock
Mounting Styles:	In-line, flange
Accessories:	Backshells, fixing slide, clips, sealing covers, blind plugs



# LEAVYSEAL Connectors

The heavy duty LEAVYSEAL connectors are multi-pin and accept multiple wire sizes. LEAVYSEAL products are available in several mounting styles and utilize a lever lock system for mating. The housings come in six sizes and feature an integrated cable attachment.



## Key Features

Contact System:	AMP MCP
Contact Sizes:	1.5K (up to 20 amps), 2.8 (up to 40 amps), 6.3 (up to 40 amps)
Wire Size:	6.0-.20 mm <sup>2</sup>
Cavity Arrangements:	15, 18, 21, 22, 26, 29, 31, 39, 46, 62, 92
Material:	Thermoplastic housing
Mating Mechanism:	Lever
Contact Retention:	Integrated secondary lock
Mounting Styles:	In-line, flange, or PCB
Accessories:	Backshells, flanges, locking slide, sealing covers

# STRIKE Series

The STRIKE connector series features a lever lock system and offers two cavity arrangements. The environmentally sealed series is suitable for heavy duty equipment applications and offers mixed wire size cavity arrangements. The 32 cavity arrangement is available in PCB or flange mount. The 64 cavity arrangement is available in flange mount.

## Key Features

Contact System:	DEUTSCH
Contact Sizes:	16 (13 amps), 20 (7.5 amps)
Wire Gauge:	14-22 AWG (2.50-0.35 mm <sup>2</sup> )
Cavity Arrangements:	32, 64
Material:	Thermoplastic housing
Mating Mechanism:	Lever
Contact Retention:	Terminal position assurance (TPA)
Mounting Styles:	Flange, PCB
Accessories:	Backshells



# Superseal 1.0 Connectors

The Superseal 1.0 mm connectors are designed to meet the increasing need for dependable printed circuit board applications in harsh environments. The Superseal headers are available with straight or right-angle pins. Various locking latch options and keying configurations are available.



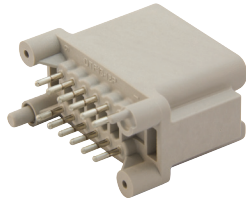
## Key Features

Contact System:	1.0 mm
Contact Sizes:	1.0 mm (up to 15 amps)
Wire Size:	1.25-.50 mm <sup>2</sup>
Cavity Arrangements:	26, 34, 60
Material:	Thermoplastic housing
Mating Mechanism:	Integrated latch
Contact Retention:	Terminal position assurance (TPA)
Mounting Styles:	PCB



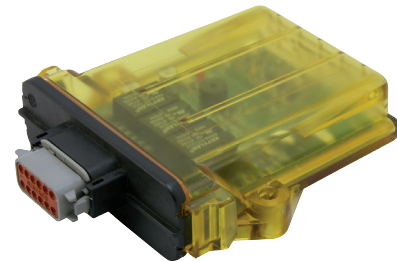
# Printed Circuit Board Connectors

TE Connectivity's Industrial & Commercial Transportation PCB connectors are available in several series and are manufactured to maintain the integrity and continuity of data and power signals in harsh environments. PCB connectors feature straight or right-angle pins and offer flange or flangeless options. PCB enclosures with multi-pin headers are also available.



## Key Features

Contact System:	Series specific
Contact Sizes:	12 (25 amps), 1.3 mm (up to 17 amps), 1.0 mm (up to 15 amps), 16 (13 amps), 20 (7.5 amps)
Wire Gauge:	10-22 AWG (6.00-0.35 mm <sup>2</sup> )
Cavity Arrangements:	2, 3, 4, 6, 8, 9, 12, 14, 23, 24, 26, 32, 34, 35, 36, 40, 48, 50, 60, 64, 70, 76
Applicable Series:	AMPSEAL, Circular DIN, DRC, DT, DTM, DTP, HD10, STRIKE, Superseal 1.0, EEC enclosures



# Contacts

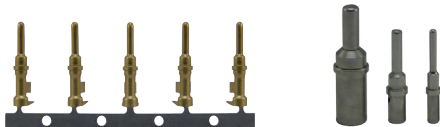
Contacts are available in solid and stamped & formed styles:

Solid contacts

- DEUTSCH contact system
- Suitable for field service
- Terminate 4 to 20 AWG (25.00-0.50 mm<sup>2</sup>)
- Nickel or gold plating
- Sold in bulk

Stamped & formed contacts

- 1.0 mm, 1.3 mm, 1.58 mm HDSF, 2.5 mm, AMP MCP, and DEUTSCH contact systems
- Suitable for high production volumes at low cost
- Terminate 10 to 22 AWG (6.00-0.20 mm<sup>2</sup>)
- Nickel, gold, or tin plating
- Sold on reels or loose piece



# Tooling

Crimp tools are offered in several styles:

Hand Tools

- Used for field service or low volumes, easy to use hand crimp tools for multiple sizes of solid or stamped & formed contacts are available

High Volume

- A pneumatic tool with interchangeable dies and locators for solid contacts or applicator dies for stamped & formed contacts

Fully Automated

- A wide range of tooling for wire harnessing and printed circuit manufacturing is available, contact TE Application Tooling for more information



## **TE Connectivity**

Industrial & Commercial Transportation

### **Asia:**

+86-400-820-6015

### **Europe, Middle East, & Africa:**

+49-6251-133-0

### **North America:**

+1-888-441-9982

[te.com](http://te.com)

While TE Connectivity has made every reasonable effort to ensure the accuracy of the information in this document, TE does not guarantee that it is error-free, nor does TE make any other representation, warranty or guarantee that the information is accurate, correct, reliable or current. TE reserves the right to make any adjustments to the information contained herein at any time without notice.

AMP MCP, AMPSEAL, AMPSEAL 16, DEUTSCH, LEAVYSEAL, STRIKE, TE Connectivity and TE Connectivity (logo) are trademarks.

© TE Connectivity Ltd. family of companies. All rights reserved.