



KEY FEATURES

tooling for simple installation

Chamfered connector end allows cable to be inserted easily

One-piece, seamless construction from electrolytic tough pitch (ETP) copper for superior electrical performance and mechanical operation

Closed barrel transition design for protection from moisture and contaminants

Tin-plated for corrosion resistance and durability, and tempered for easy crimping

Standard AMPOWER Terminals - cable to device power connections up to 3.3Kv (can produce specials for up to 33Kv)

AMPOWER-Metrics Terminals and Splices Solutions

Introducing

AMPOWER-Metrics Copper compression terminals and Splices are ideally suited for power generation and distribution in Rail, Mass Transit, Power Transmission, Military markets and industrial applications.

Connectors can be used on applications up to 35 kV, and meet the requirements of NFFO33 (specific clauses) BS4G 178 Part 2 1986 and RSE/STD 024 Part 8 - Issue A (London Underground Approval). when applied with approved die sets.

TE Connectivity provides a high quality solution that is designed specifically a wide variety of European stranded, flexible cables and leads to deliver maximum conductivity, excellent mechanical strength and electrical performance.

With our compression crimping TE offers a reliable technology that is completely mechanical and controllable from first to last crimp, eliminating variables common to other crimping methods, such as melting temperatures, flux composition, entrapped gases or oxidation.

Physical & Electrical

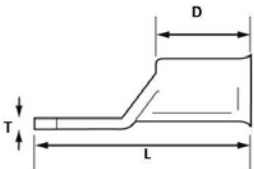
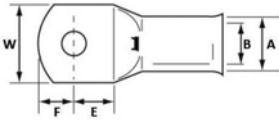
Properties Material:
Seamless Copper Tube to
BSEN 12449: 1999
Plating: Electro tin plate
Heat treating: Soft
tempered

Voltage Rating:
For applications up to
35kV consult shielded
cable manufacturers
stress relief instructions.

Agency approvals:
(when crimped with the
approved die sets):
BS4G 178 Part 2 1986 and
RSE/STD 024 Part 8 - Issue
A (London Underground
Approval).

Complying with the
following clause of
NFF 00363

Clause Title	Clauses
Durability	6
General inspection	5.1, 10-1-1, 10-1-2, 10-1-3,
Geometric	10-2-1
Mechanical Properties	Tensile 10-3-1, vibration 10-3-4
Electrical	10-4-1, 10-4-3
Physical	10-5-1



For Cable Size (mm)	TE Part description	TE PCN	Prod Code	A	B	W	E	F	D	L	T
1.5	AMP-METRIC-1.5-M3	2178687-1	6093	3.6	1.9	5.5	5	3	7.5	17	1.4
	AMP-METRIC-1.5-M4	2178687-2	6093	3.6	1.9	6.7	6	4	7.5	19.5	1.1
	AMP-METRIC-1.5-M5	2178687-3	6093	3.6	1.9	7.7	6.5	4.5	7.5	20.4	0.9
	AMP-METRIC-1.5-SPLICE	2178582-1	6094								
2.5	AMP-METRIC-2.5-M3	2178688-1	6093	3.9	2.4	5.5	5	3	7.8	18	1.6
	AMP-METRIC-2.5-M4	2178688-2	6093	3.9	2.4	6.7	6	4	7.8	20	1.4
	AMP-METRIC-2.5-M5	2178688-3	6093	3.9	2.4	7.7	6.9	4.5	7.8	21.2	1.1
	AMP-METRIC-2.5-M6	2178688-4	6093	3.9	2.4	9	7.5	5.5	7.8	23	1
	AMP-METRIC-2.5-SPLICE	2178583-1	6094								
4.0	AMP-METRIC-4.0-M4	2178689-1	6093	4.7	2.8	7	6	4	8	20.5	1.7
	AMP-METRIC-4.0-M5	2178689-2	6093	4.7	2.8	8	6.4	4.6	8	21.5	1.4
	AMP-METRIC-4.0-M6	2178689-3	6093	4.7	2.8	9	7.5	5.5	8	23.5	1.3
	AMP-METRIC-4.0-M8	2178689-4	6093	4.7	2.8						
AMP-METRIC-4.0-SPLICE	2178584-1	6094									
6.0	AMP-METRIC-6.0-M4	2178690-1	6093	5.3	3.4	7	6	4	10	22.5	2
	AMP-METRIC-6.0-M5	2178690-2	6093	5.3	3.4	8	6.4	4.6	10	23.5	1.9
	AMP-METRIC-6.0-M6	2178690-3	6093	5.3	3.4	9	7.5	5.5	10	25.5	1.7
	AMP-METRIC-6.0-M8	2178690-4	6093	5.3	3.4	11.5	10	7.0	10	29.5	1.6
	AMP-METRIC-6.0-M10	2178690-5	6093	5.3	3.4	14.5	11.8	7.2	10	31	0.9
	AMP-METRIC-6.0-SPLICE	2178585-1	6094								
10	AMP-METRIC-10-M5	2178691-1	6093	6.9	4.5	10.5	5.9	5.1	9	27	2
	AMP-METRIC-10-M6	2178691-2	6093	6.9	4.4	10.5	5.9	5.1	9	27	2
	AMP-METRIC-10-M8	2178691-3	6093	6.9	4.4	14	9.8	8.3	10	35	1.6
	AMP-METRIC-10-M10	2178691-4	6093	6.9	4.4	16	12	10	10	39	1.5
	AMP-METRIC-10-M12	2178691-5	6093	6.9	4.4	18	12	10	10	39	1.2
AMP-METRIC-10-SPLICE	2178586-1	6094									
16	AMP-METRIC-16-M5	2178692-1	6093	8	5.6	11	5.9	5.1	11	29.5	2.2
	AMP-METRIC-16-M6	2178692-2	6093	8	5.6	11	5.9	5.1	11	29.5	2.2
	AMP-METRIC-16-M8	2178692-3	6093	8	5.6	14	9.8	8.3	11	38	1.7
	AMP-METRIC-16-M10	2178692-4	6093	8	5.6	16	12	10	11	42	1.5
	AMP-METRIC-16-M12	2178692-5	6093	8	5.6	18	12	12	11	42	1.3
AMP-METRIC-16-SPLICE	2178587-1	6094									
25	AMP-METRIC-25-M5	2178693-1	6093	9.5	7	13.5	9.8	8.3	13	40	2.4
	AMP-METRIC-25-M6	2178693-2	6093	9.5	7	13.5	9.8	8.3	13	40	2.4
	AMP-METRIC-25-M8	2178693-3	6093	9.5	7	13.5	9.8	8.3	13	40	2.4
	AMP-METRIC-25-M10	2178693-4	6093	9.5	7	16	12	10	13	44	2
	AMP-METRIC-25-M12	2178693-5	6093	9.5	7	18	12	10	31	44	1.8
AMP-METRIC-25-SPLICE	2178588-1	6094									
35	AMP-METRIC-35-M5	2178694-1	6093	11	8.2	15.5	9.8	8.3	14	41	2.8
	AMP-METRIC-35-M6	2178694-2	6093	11	8.2	15.5	9.8	8.3	14	41	2.8
	AMP-METRIC-35-M8	2178694-3	6093	11	8.2	15.5	9.8	8.3	14	41	2.8
	AMP-METRIC-35-M10	2178694-4	6093	11	8.2	15.5	12	10	14	45	2.8
	AMP-METRIC-35-M12	2178694-5	6093	11	8.2	18	12	10	14	45	2.2
	AMP-METRIC-35-M14	2178694-6	6093	11	8.2	20	15	12	14	50	2
AMP-METRIC-35-SPLICE	2178589-1	6094									
50	AMP-METRIC-50-M5	2178695-1	6093	12.1	9.5	17.2	9.8	8.3	18	46	2.4
	AMP-METRIC-50-M6	2178695-2	6093	12.1	9.5	17.2	9.8	8.3	18	46	2.4
	AMP-METRIC-50-M8	2178695-3	6093	12.1	9.5	17.2	9.8	8.3	18	46	2.4
	AMP-METRIC-50-M10	2178695-4	6093	12.1	9.5	17.2	12	10	18	50	2.4
	AMP-METRIC-50-M12	2178695-5	6093	12.1	9.5	17.2	12	10	18	50	2.4
	AMP-METRIC-50-M14	2178695-6	6093	12.1	9.5	20	15	12	18	55	1.9
	AMP-METRIC-50-M16	2178695-7	6093	12.1	9.5	22	15	12	18	55	1.7
AMP-METRIC-50-SPLICE	2178590-1	6094									

KEY FEATURES

tooling for simple installation

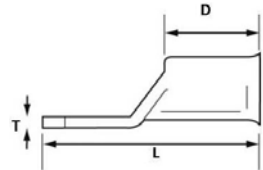
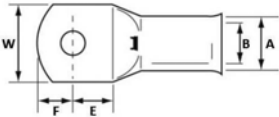
Chamfered connector end allows cable to be inserted easily

One-piece, seamless construction from electrolytic tough pitch (ETP) copper for superior electrical performance and mechanical operation

Closed barrel transition design for protection from moisture and contaminants

Tin-plated for corrosion resistance and durability, and tempered for easy crimping

Standard AMPPOWER Terminals – cable to device power connections up to 3.3Kv (can produce specials for up to 33Kv)



For Cable Size (mm)	TE Part description	TE PCN	Prod Code	A	B	W	E	F	D	L	T	
70	AMP-METRIC-70-M5	2178696-1	6093	15	11.5	21.2	9.8	8.3	18	48	3.5	
	AMP-METRIC-70-M6	2178696-2	6093	15	11.5	21.2	9.8	8.3	18	48	3.5	
	AMP-METRIC-70-M8	2178696-3	6093	15	11.5	21.2	9.8	8.3	18	48	3.5	
	AMP-METRIC-70-M10	2178696-4	6093	15	11.5	21.2	12	10	18	52	3.5	
	AMP-METRIC-70-M12	2178696-5	6093	15	11.5	21.2	12	10	18	52	3.5	
	AMP-METRIC-70-M14	2178696-6	6093	15	11.5	21.2	16.5	16.5	18	63	3.5	
	AMP-METRIC-70-M16	2178696-7	6093	15	11.5	21.2	16.5	16.5	18	63	3.5	
	AMP-METRIC-70-SPLICE	2178591-1	6094									
95	AMP-METRIC-95-M6	2178697-1	6093	17	13.5	24.3	12	10	24	58	3.5	
	AMP-METRIC-95-M8	2178697-2	6093	17	13.5	24.3	12	10	24	58	3.5	
	AMP-METRIC-95-M10	2178697-3	6093	17	13.5	24.3	12	10	24	58	3.5	
	AMP-METRIC-95-M12	2178697-4	6093	17	13.5	24.3	12	10	24	58	3.5	
	AMP-METRIC-95-M14	2178697-5	6093	17	13.5	24.3	16.5	16.5	24	69	3.5	
	AMP-METRIC-95-M16	2178697-6	6093	17	13.5	24.3	16.5	16.5	24	69	3.5	
		AMP-METRIC-95-SPLICE	2178592-1	6094								
120	AMP-METRIC-120-M10	2178698-1	6093	19	15	27.2	16.5	16.5	27	73	4	
	AMP-METRIC-120-M12	2178698-2	6093	19	15	27.2	16.5	16.5	27	73	4	
	AMP-METRIC-120-M14	2178698-3	6093	19	15	27.2	16.5	16.5	27	73	4	
	AMP-METRIC-120-M16	2178698-4	6093	19	15	27.2	16.5	16.5	27	73	4	
	AMP-METRIC-120-M20	2178698-5	6093	19	15	27.2	18.8	14.3	27	73	4	
		AMP-METRIC-120-SPLICE	2178593-1	6094								
150	AMP-METRIC-150-M10	2178699-1	6093	21	16.5	30	16.5	16.5	27	78	4.5	
	AMP-METRIC-150-M12	2178699-2	6093	21	16.5	30	16.5	16.5	27	78	4.5	
	AMP-METRIC-150-M14	2178699-3	6093	21	16.5	30	16.5	16.5	27	78	4.5	
	AMP-METRIC-150-M16	2178699-4	6093	21	16.5	30	16.5	16.5	27	78	4.5	
	AMP-METRIC-150-M20	2178699-5	6093	21	16.5	30	16.5	16.5	27	78	4.5	
		AMP-METRIC-150-SPLICE	2178594-1	6094								
	185	AMP-METRIC-185-M12	2178700-1	6093	23	18.5	33.5	16.5	16.5	30	82	4.5
AMP-METRIC-185-M14		2178700-2	6093	23	18.5	33.5	16.5	16.5	30	82	4.5	
AMP-METRIC-185-M16		2178700-3	6093	23	18.5	33.5	16.5	16.5	30	82	4.5	
AMP-METRIC-185-M20		2178700-4	6093	23	18.5	33.5	18.8	14.3	30	82	4.5	
		AMP-METRIC-185-SPLICE	2178595-1	6094								
240	AMP-METRIC-240-M10	2178701-1	6093	26	21	37.7	18	17	32	88	5	
	AMP-METRIC-240-M12	2178701-2	6093	26	21	37.7	18	17	32	88	5	
	AMP-METRIC-240-M14	2178701-3	6093	26	21	37.7	18	17	32	88	5	
	AMP-METRIC-240-M16	2178701-4	6093	26	21	37.7	18	17	32	88	5	
	AMP-METRIC-240-M20	2178701-5	6093	26	21	37.7	18	17	32	88	5	
		AMP-METRIC-240-SPLICE	2178596-1	6094								
300	AMP-METRIC-300-M10	2178702-1	6093	28	23	41	18	17	37	97	5	
	AMP-METRIC-300-M12	2178702-2	6093	28	23	41	18	17	37	97	5	
	AMP-METRIC-300-M14	2178702-3	6093	28	23	41	18	17	37	97	5	
	AMP-METRIC-300-M16	2178702-4	6093	28	23	41	18	17	37	97	5	
	AMP-METRIC-300-M20	2178702-5	6093	28	23	41	18	17	37	97	5	
		AMP-METRIC-300-SPLICE	2178597-1	6094								
400	AMP-METRIC-400-M10	2178703-1	6093	32	27	47.3	25	25	38	113	5	
	AMP-METRIC-400-M12	2178703-2	6093	32	27	47.3	25	25	38	113	5	
	AMP-METRIC-400-M14	2178703-3	6093	32	27	47.3	25	25	38	113	5	
	AMP-METRIC-400-M16	2178703-4	6093	32	27	47.3	25	25	38	113	5	
	AMP-METRIC-400-M20	2178703-5	6093	32	27	47.3	25	25	38	113	5	
		AMP-METRIC-400-SPLICE	2178598-1	6094								
500	AMP-METRIC-500-M10	2178704-1	6093	38.1	30	55	29	25	44	127	8.2	
	AMP-METRIC-500-M12	2178704-2	6093	38.1	30	55	29	25	44	127	8.2	
	AMP-METRIC-500-M14	2178704-3	6093	38.1	30	55	29	25	44	127	8.2	
	AMP-METRIC-500-M16	2178704-4	6093	38.1	30	55	29	25	44	127	8.2	
	AMP-METRIC-500-M20	2178704-5	6093	38.1	30	55	29	25	44	127	8.2	

Physical & Electrical

Properties Material:

Seamless Copper Tube to BSEN 12449: 1999
 Plating: Electro tin plate
 Heat treating: Soft tempered

Voltage Rating:

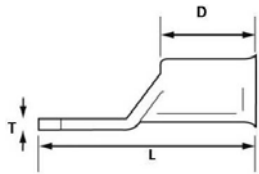
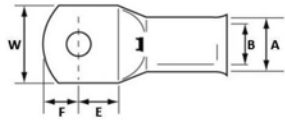
For applications up to 35kV consult shielded cable manufacturers stress relief instructions.

Agency approvals:

(when crimped with the approved die sets):
 BS4G 178 Part 2 1986 and RSE/STD 024 Part 8 - Issue A (London Underground Approval).

Complying with the following clause of NFF 00363

Clause Title	Clauses
Durability	6
General inspection	5.1, 10-1-1, 10-1-2, 10-1-3,
Geometric	10-2-1
Mechanical Properties	Tensile 10-3-1, vibration 10-3-4
Electrical	10-4-1, 10-4-3
Physical	10-5-1



For Cable Size (mm)	TE Part description	TE PCN	Prod Code	A	B	W	E	F	D	L	T
630	AMP-METRIC-630-M12	2178705-1	6093	44	33.8	63	25	23	46	127	10.2
	AMP-METRIC-630-M14	2178705-2	6093	44	33.8	63	25	23	46	127	10.2
	AMP-METRIC-630-M16	2178705-3	6093	44	33.8	63	25	23	46	127	10.2
	AMP-METRIC-630-M20	2178705-4	6093	44	33.8	63	25	23	46	127	10.2
	AMP-METRIC-630-M20	2178705-5	6093	44	33.8	63	25	23	46	127	10.2
800	AMP-METRIC-800-M12	2178706-1	6093	49	38	164	34	34	56	70	11
	AMP-METRIC-800-M16	2178706-2	6093	49	38	164	34	34	56	70	11
	AMP-METRIC-800-M20	2178706-3	6093	49	38	164	34	34	56	70	11
1000	AMP-METRIC-1000-M16	2178707-1	6093	53	42.5	77	34	34	56	169	10.5
	AMP-METRIC-1000-M20	2178707-2	6093	53	42.5	77	34	34	56	169	10.5

TE Part description	TE PCN
AMPC-MH-185	2178605-1
AMPC-MH-185-dies	2178606-1
DIES	
AMPC-10-120	2178607-1
AMPC-150	2178608-1
AMPC-35-50	2178609-1
AMPC-25-70	2178610-1
AMPC-16-95	2178611-1
AMPC-185	2178612-1

